

# Travel Resources

**Israel**

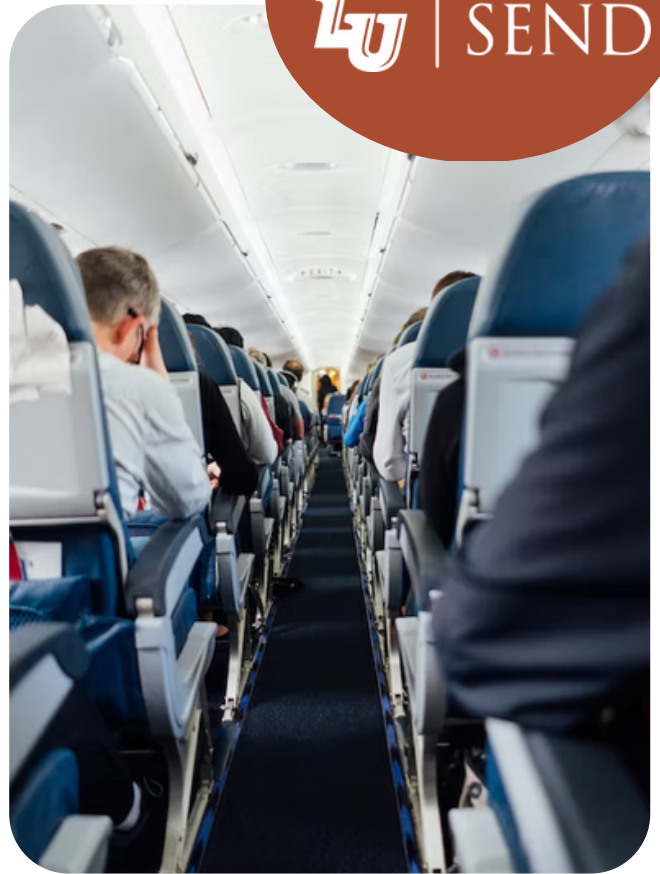
**School of Divinity**



**International Travel Insurance | Currency & Credit Cards  
VAT (Value Added Tax) | Cell Phone Usage | Meals | Internet Access |  
Vaccinations Additional Resources | Fun Facts**

## INTERNATIONAL TRAVEL INSURANCE

International travel insurance is included within your trip costs, covering you from January 4th, 2024 through January 15th, 2024. The policy is comprehensive in nature and is used throughout the University for all international travel. If you would like coverage for additional aspects of travel beyond what is highlighted in the policy, please feel free to purchase separate third party insurance as a supplement to what is already provided. For more information on your current coverage email [LUSend@liberty.edu](mailto:LUSend@liberty.edu)

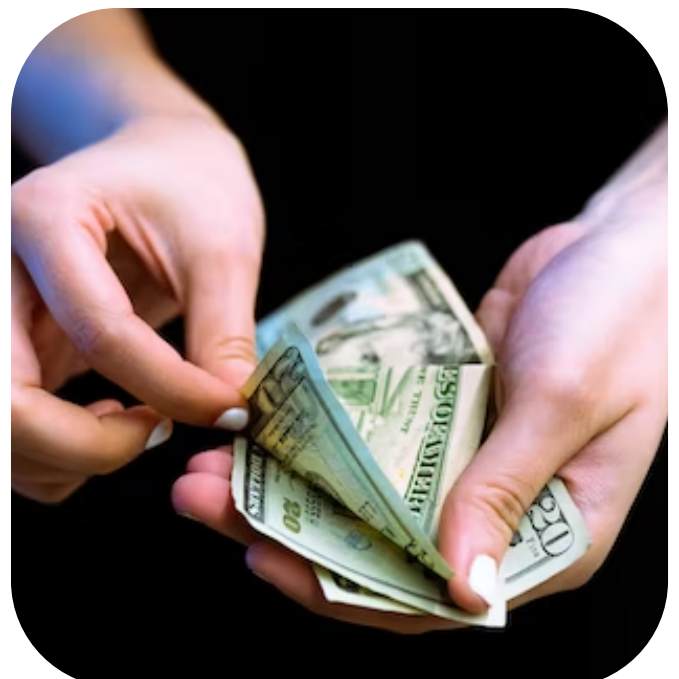


**“WHEREVER YOU GO  
BECOMES A PART OF YOU  
SOMEHOW.”**

– Anita Desai

## CURRENCY & CREDIT CARDS

In Israel, the Israeli New Shekel is the country's legal tender. Major international credit cards are likely accepted in large cities. Local currency can be withdrawn at an ATM with a debit card, but fees will apply. Make sure to contact your bank a few weeks before departure to alert them to your international travel dates and locations. This will keep your cards active while abroad. Keep in mind that fees will be charged for international purchases. Contact your bank for these fees.



## VAT

"VAT" stands for value-added tax. The tax is included in the price of the item, so the price you see is the price you pay. In Israel, the standard VAT rate is 17%.

## INTERNET ACCESS

Your hotels and bus may have access to the internet, however, keep in mind that unless you have purchased an international data plan for your phone, access to email, texting, and other Internet-based applications will be subject to Wi-fi availability.

## CELL PHONE USAGE

Most cell phone carriers have additional international packages that you can add on at a monthly or daily rate. Depending on the carrier, this can cost anywhere from \$10-\$40 and will provide limited text messages, data usage, and calling minutes.

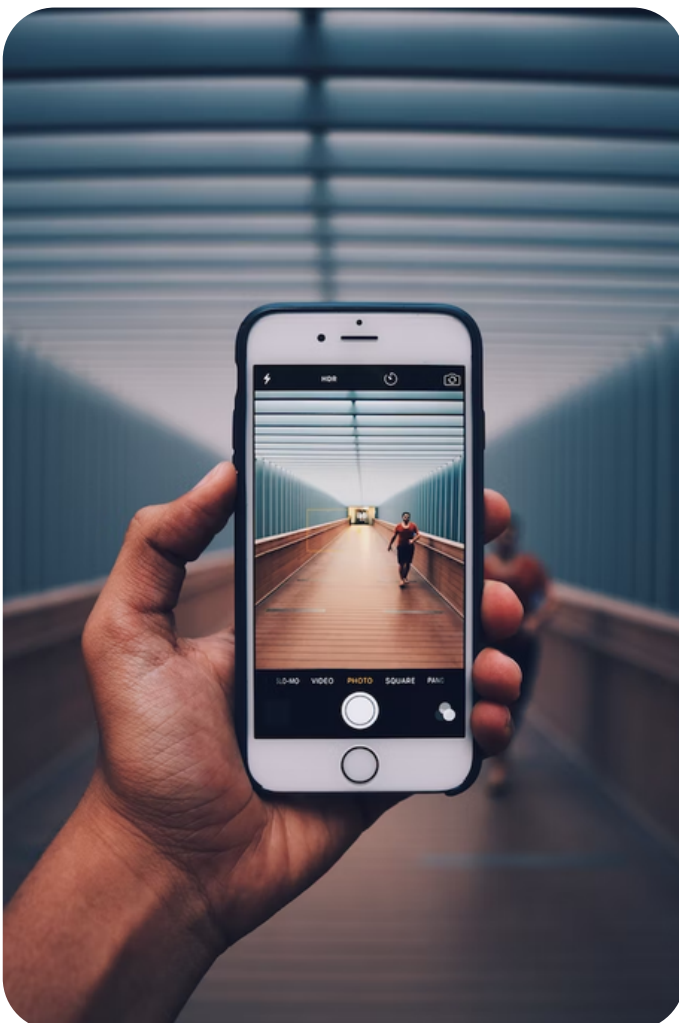
## VACCINATIONS

We recommend using resources such as the Center for Disease Control as you consult with your home doctor or other trusted medical sources, in order to make the best possible decision regarding your health. If you reside in the Central Virginia Region, below are local medical offices that you may consider consulting. Keep in mind some vaccinations require a minimum amount of time to take effect before entering another country. Communicate when and where you will be traveling.

Lynchburg Health Department  
(434) 947-6785  
1900 Thomson Dr. Lynchburg,  
24501

Rustburg Family Pharmacy  
(434) 332-1730  
925 Village Hwy Suite B. Box 1005  
Rustburg, VA 24588

Liberty University Health Center  
(434) 338-7774  
Commons 3 1606 Regents Pkwy





## MEALS

Israeli food incorporates many foods traditionally included in other Middle Eastern and Mediterranean cuisines, so that spices like za'atar and foods such as falafel, hummus, msabbha, shakshouka, and couscous are now widely popular in Israel.

### FOOD & DRINK SUGGESTIONS

- Sachlav (Sachlav is a thick, milk-based drink served hot and topped with pistachios, grated coconut and raisins).
- Ice Café (Unlike traditional coffee, this drink is a particularly sweet and refreshing coffee-flavored slushy)
- Shakshuka (eggs, vegetables, and seasonings make up this popular Israeli dish)
- Burika (A thin, savoury crêpe filled with mashed potato and egg that's then stuffed inside a pitta with hot sauce and salad)



\*We will try our best to provide a variety of food options for meals but cannot accommodate every dietary preference. For daily touring, it is highly encouraged to bring your own snacks if you believe you will get hungry during the day. Touring will be on a tight schedule, and it's always a good idea to have a snack if we find ourselves running overtime at lunch.

## FUN FACTS!

1. Israel has two official languages: Hebrew and Arabic.
2. Israel is only 1/6 of 1% of the landmass of the Middle East (Israel is roughly half the size of Lake Michigan).
3. Israel has more museums per capita than any other country in the world.
4. The Dead Sea in Israel is the lowest point on earth, at 1,315 feet below sea level at its lowest point.
5. Voice mail technology was developed in Israel.
6. About 1 million notes are left in the Western Wall each year.
7. Israel takes in more immigrants than any other country in the world per capita.
8. Jerusalem today is still a walled city. Jerusalem's walls are about 2.5 miles long, 40 feet tall, and 8 feet thick.

## ADDITIONAL RESOURCES

**Lonely Planet** – A helpful guide to understanding culture, travel tips, and additional insights.

**Currency Converter** – Plan how much money you need to bring in US Currency.

**Passport Application** – Don't have a passport yet? Follow the U.S. Department of State's instructions for applying for a passport